

**ITEM 52. P – OTHER AUTHORITIES – 1P AND LOADING ZONES – RUTLAND
STREET SURRY HILLS**

TRIM RECORD NO: 2016/

RECOMMENDATION

It is recommended that the Committee endorse the following reallocation of parking in Rutland Street, Surry Hills, as:

- (A) "Loading Zone 8am-6pm Mon-Fri" on the northern side of Rutland Street, between the points 87.8 metres and 96.5 metres, east of Chalmers Street;
- (B) "1P 8.30am-6pm Mon-Fri" on the southern side of Rutland Street, between the points 34.6 metres and 43 metres, west of Elizabeth Street; and
- (C) "Loading Zone 8am-6pm Mon-Fri" on the southern side of Rutland Street, between the points 69.2 metres and 82.2 metres, west of Elizabeth Street.

VOTING MEMBERS FOR THIS ITEM

<i>Voting Members</i>	<i>Support</i>	<i>Object</i>
City of Sydney		
Roads and Maritime Services		
NSW Police – Sydney City LAC		
Representative for the Member for Sydney		

DECISION

BACKGROUND

On 4 June 2014 the NSW Government gave planning approval for the CBD and South East Light Rail (CSELR). This new light rail line will extend from Circular Quay along George Street to Central Station, through Surry Hills to Moore Park, then to Kensington and Kingsford via Anzac Parade and Randwick via Alison Road and High Street.

This route was selected by NSW Government following extensive feasibility investigations and consultation with key stakeholders. Transport for NSW is now progressing delivery of the CBD and South East Light Rail (CSELR) extensions in consultation with councils, business, industry and the community.

From August 2016 the CSELR construction activities will commence on Devonshire Street with the first zone closure between Elizabeth and Chalmers Streets. The rest of Devonshire Street is scheduled to be closed progressively with the final zone closure in February 2017. This work will result in changes to parking restrictions along Devonshire Street as well as nearby streets.

COMMENTS

Once the CSELR is operational, Devonshire Street will have limited vehicular access via a single eastbound lane from Chalmers Street to Crown Street. A lane in each direction will be provided between Crown Street and Bourke Street.

The changes will result in a loss of approximately 151 kerbside spaces on Devonshire Street and therefore changes to parking restrictions in nearby streets are required to reduce the impact to the residents and businesses.

TfNSW is proposing to provide new loading zones (8am to 6pm Monday to Friday) in Rutland Street as part of the first zone closure of Devonshire Street between Elizabeth and Chalmers Streets - planned for August. This will enable local businesses to continue to receive goods to service the community.

The new loading zones will replace existing unrestricted parking zones or 1 hour period parking zones. Parking will be allowed in the new loading zone locations between 6pm - 8am Monday to Friday, and on weekends.

CONSULTATION

TfNSW has consulted with the local residents, businesses and affected stakeholders. The results of the consultation will be reported to the Committee for consideration.

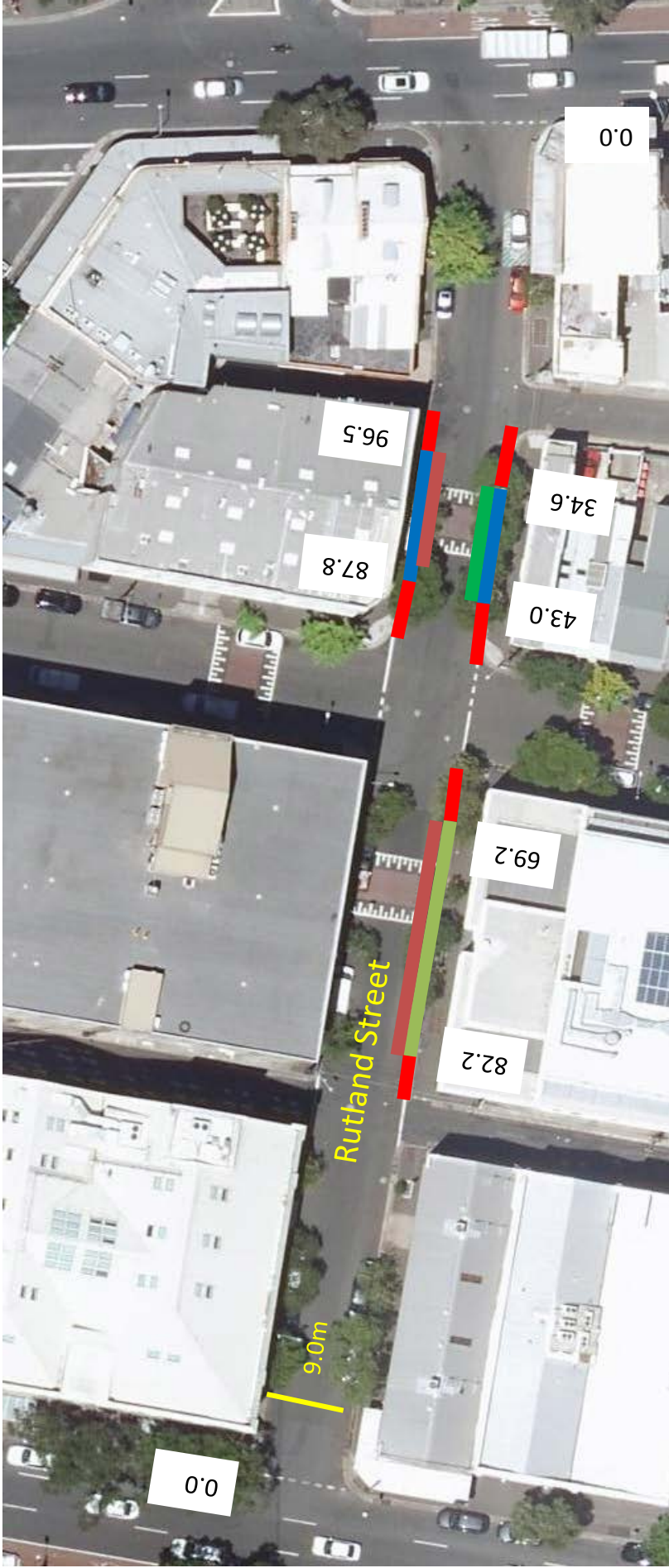
FINANCIAL

All costs associated with the parking change will be borne by Transport for NSW.

ATTACHMENTS

Other Authorities – Loading Zones – Rutland Street Surry Hills

François LaRue, Transport Planning Project Manager – CBD Coordination Office,
TfNSW



Legend:

- Proposed 1P 8:30am-6pm Mon-Fri
- Proposed Loading Zone 7:30am-6pm Mon-Fri
- Existing Unrestricted Parking zones
- Existing 1P 8:30am-6pm Mon-Fri
- Existing No Stopping Zone

